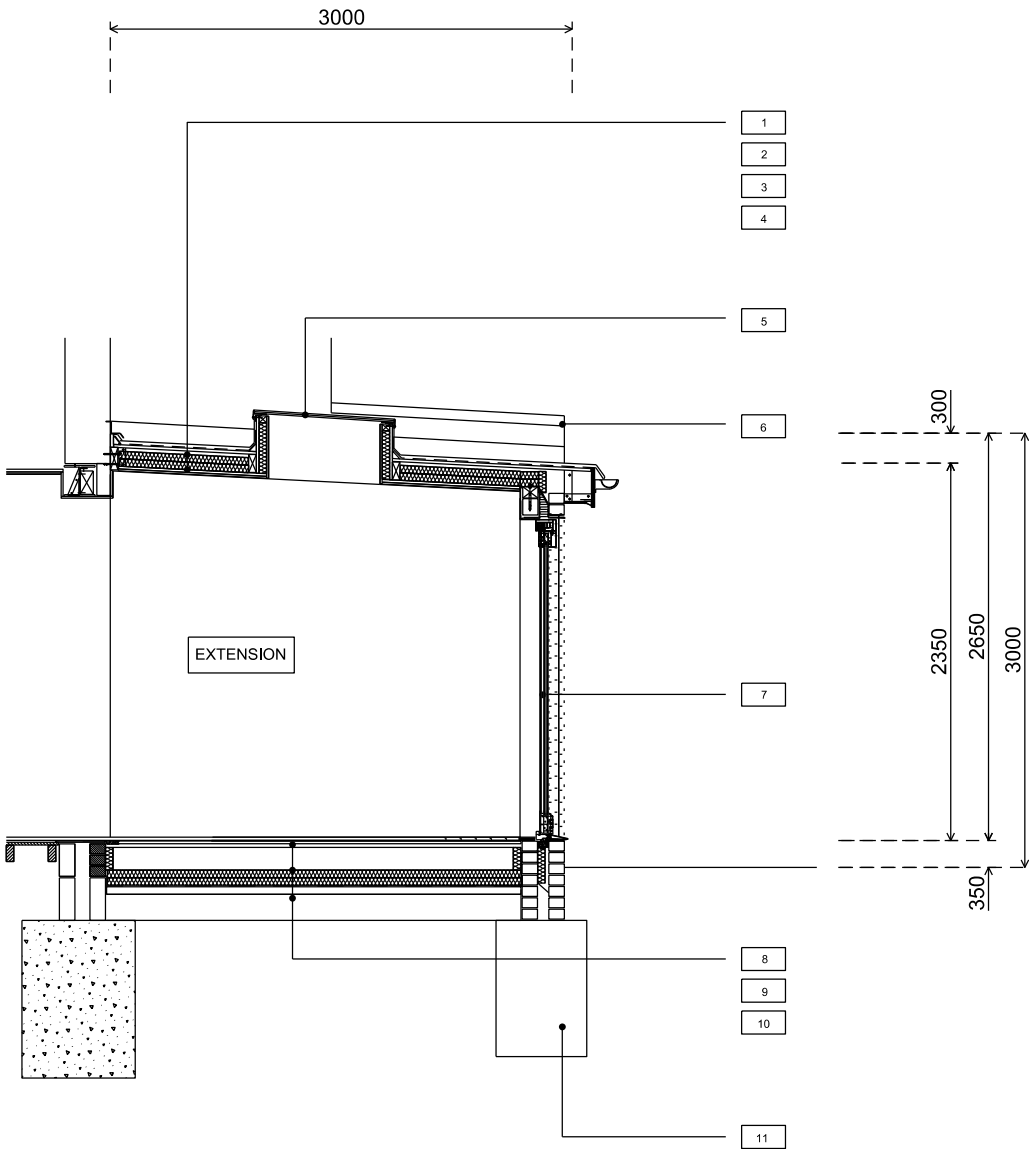


01
130

Proposed Front Elevation



02
130

Section detail

KEY	
1	Waterproofing resin finishes
2	Insulation with ventilation space over
3	Vapour control layer
4	Ceiling lining
5	900 x 900 flat roof lights (TBC)
6	Cast stone coping
7	Sliding door to re-use
8	Laminated timber board/ electric underfloor heating film/ underlay
9	Insulation
10	Damp proof membrane/Sub base
11	600 x1000 thick trench fill concrete foundation (tbc)

NOTE

All structural elements to be installed according to structural drawing and calculation. Our drawings are indicative only.



<div>SAFETY HEALTH AND ENVIRONMENTAL INFORMATION BOX - See Health and Safety Risk Register</div> <div>In addition to the hazards / risks normally associated with the types of work detailed on this drawing, TAKE NOTE OF THE RISKS BELOW. It is assumed that all works on this drawing will be carried out by a competent contractor working, where appropriate, to an approved method statement.</div> <div>Construction Risks</div> <div>Maintenance / Cleaning risks</div> <div>Demolition Adaptation Risks</div>	Revision	Date	Description	Drawing Purpose			Project	Drawing Title					
				Tendering				© copyright SMAL+PARTNERS, all rights reserved 2009					
				Drawn by	Checked by	Authorised by		Rear extension at 87 Lambton Road			Section Detail		
				DW	CP								
							Contact	SMAL+PARTNERS	Scale @ A3	Drawing Number	Project - Type - Level - SeriesNumber		
							110 Coombe Lane London SW20 0AY tel: 020 3598 4793 email: info@smalandpartners.com www.smalandpartners.com			1:50	S+P-573-GA-DRW-130		
									Drawing Date	Revision Date	Revision		
									30-07-2016	08-08-2016	A		